

NinerPaint 1.9 Release Notes

Warning

You should perform a
hotsync before installing
this new version.

Contact Information

- Public Forum <http://ninermedia.com/bb/>
- E-Mail: info@ninermedia.com

Table of Contents

Installation Instructions	2
What's New in 1.9	2
• Reference Grid Origin	2
• Corrupt and Missing Database Self-Help	3
• Other Changes	4

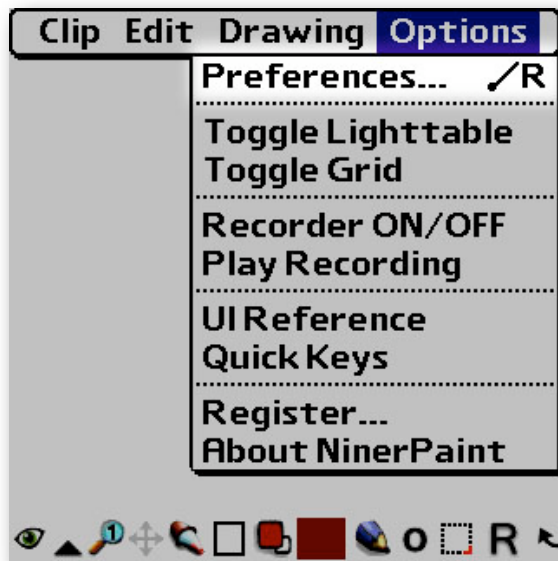
Installation Instructions

Copy the NinerPaint-1.9R1.prc file to your handheld and launch it.

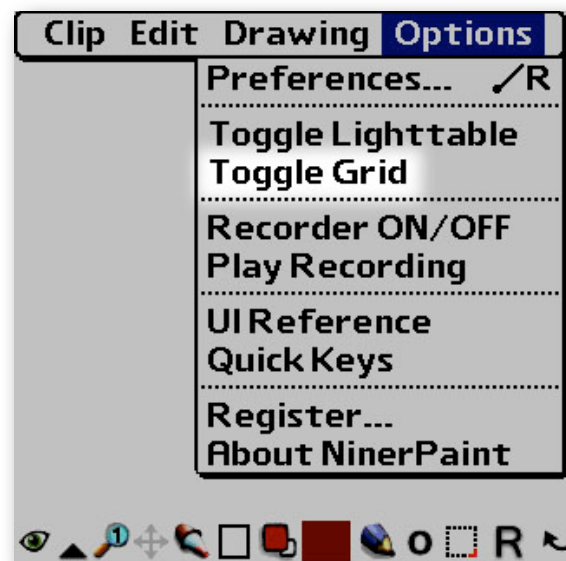
What's New in 1.9

Reference Grid Origin

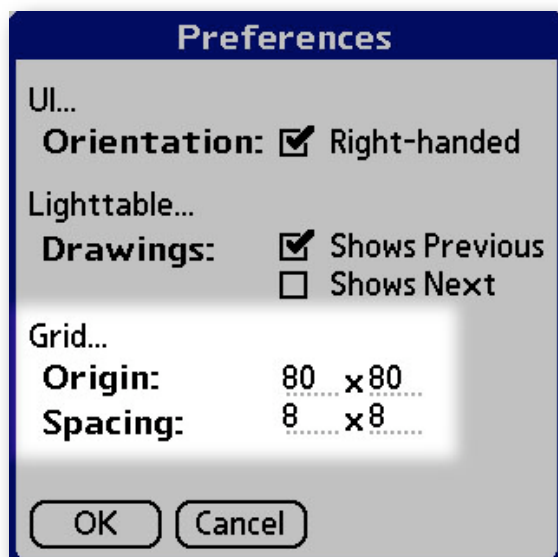
1. Select the **Options > Preferences** menu.



3. Select the **Options > Toggle Grid** menu.



2. The Preferences form pops up. Enter the origin as pixels from the top-left corner of your screen.



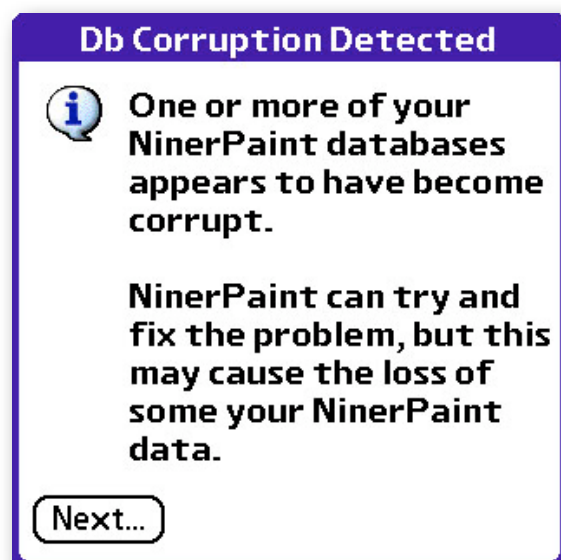
4. The grid and its origin appear.



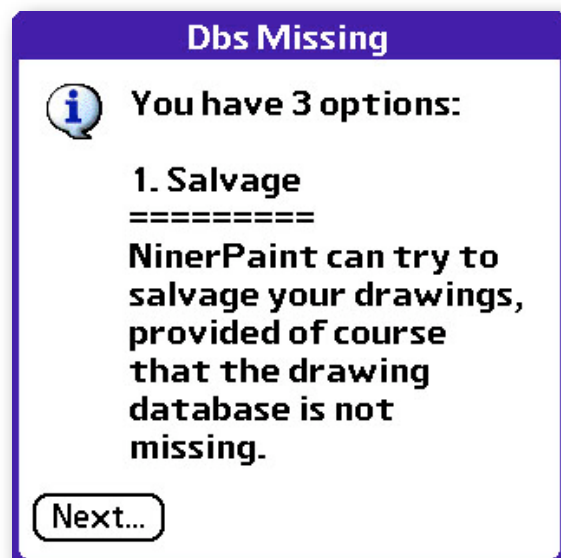
Corrupt and Missing Database Self-Help

If, through some stroke of bad luck, one or more of your NinerPaint databases go missing or become corrupt, NinerPaint will still be able to launch and perform repairs.

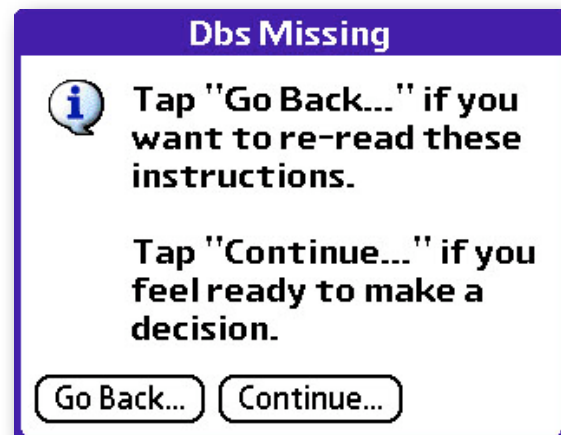
1. When such a problem occurs, you will be notified of it...



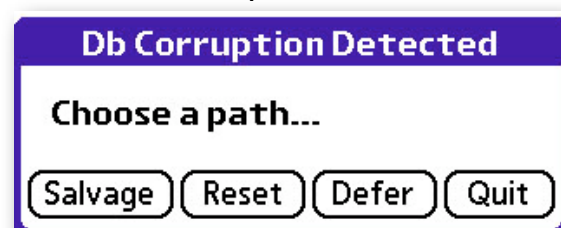
2. Several options will then be presented and explained...



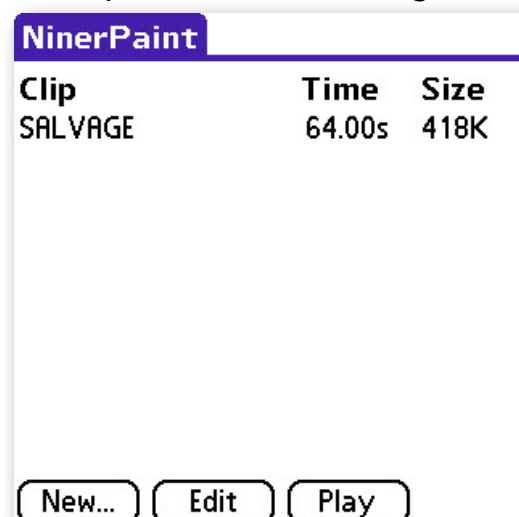
3. You will then be given a chance to re-read the instructions, in case any of them were unclear...



4. Finally, you will be asked to choose an option...



5. NinerPaint will then act according to your instructions, e.g.,



Other Changes

- The reference grid is now drawn on world coordinates rather than on screen coordinates.
- The 3/4 perspective constraints helper for the line tool has been improved with:
 1. additional projection lines to help you find the perfect position
 2. end-of-line compensation to help give you the cleanest shapes:
- bug fix: screen refresh was incomplete for rectangle tool when startX or startY > endX or endY
- bug fix: copy selection did not include pixels under edges of selection rectangle
- added shape hints for pencil tool when drawing in white or at zoom levels 2+